

Continuous Noise Monitoring Data

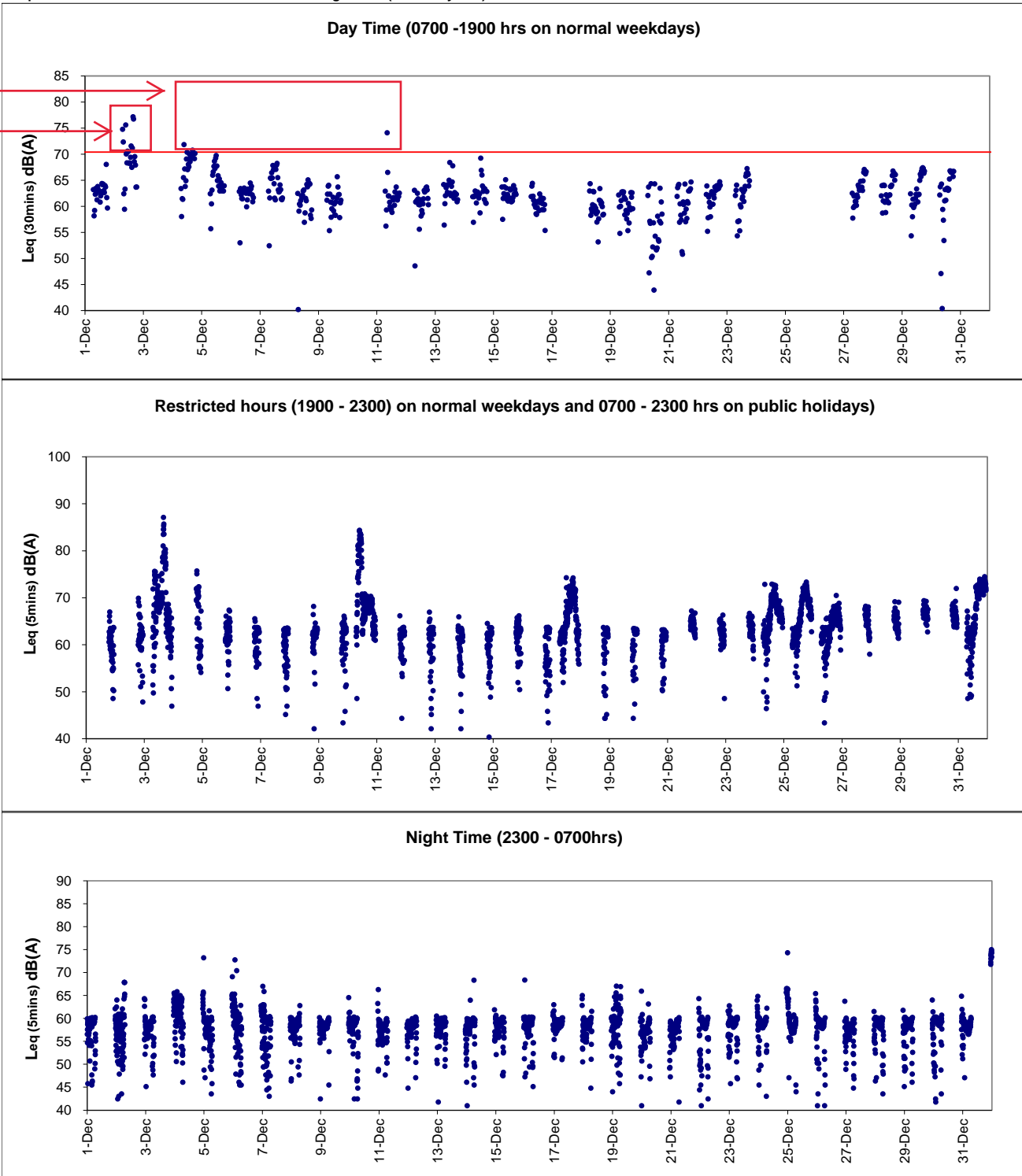
ACL3 (City Hall)

Table with 4 columns: Time (HH:MM:SS), Value (dB), Time (HH:MM:SS), Value (dB), Time (HH:MM:SS), Value (dB), Time (HH:MM:SS), Value (dB). Rows represent noise level measurements at 1-second intervals from 16:12/17 4:56 to 17:12/17 5:56.

Continuous Noise Monitoring Data ACL3 (City Hall)

30/12/17 1:56	60	31/12/17 3:01	58
30/12/17 2:01	60	31/12/17 3:06	58
30/12/17 2:06	60	31/12/17 3:11	58
30/12/17 2:11	60	31/12/17 3:16	58
30/12/17 2:16	37	31/12/17 3:21	58
30/12/17 2:21	60	31/12/17 3:26	58
30/12/17 2:26	60	31/12/17 3:31	58
30/12/17 2:31	60	31/12/17 3:36	57
30/12/17 2:36	60	31/12/17 3:41	57
30/12/17 2:41	60	31/12/17 3:46	58
30/12/17 2:46	60	31/12/17 3:51	58
30/12/17 2:51	60	31/12/17 3:56	59
30/12/17 2:56	60	31/12/17 4:01	58
30/12/17 3:01	59	31/12/17 4:06	58
30/12/17 3:06	59	31/12/17 4:11	57
30/12/17 3:11	59	31/12/17 4:16	57
30/12/17 3:16	60	31/12/17 4:21	58
30/12/17 3:21	59	31/12/17 4:26	58
30/12/17 3:26	59	31/12/17 4:31	57
30/12/17 3:31	59	31/12/17 4:36	57
30/12/17 3:36	59	31/12/17 4:41	57
30/12/17 3:41	59	31/12/17 4:46	57
30/12/17 3:46	59	31/12/17 4:51	57
30/12/17 3:51	59	31/12/17 4:56	57
30/12/17 3:56	60	31/12/17 5:01	58
30/12/17 4:01	59	31/12/17 5:06	57
30/12/17 4:06	59	31/12/17 5:11	58
30/12/17 4:11	59	31/12/17 5:16	58
30/12/17 4:16	59	31/12/17 5:21	57
30/12/17 4:21	59	31/12/17 5:26	58
30/12/17 4:26	60	31/12/17 5:31	57
30/12/17 4:31	59	31/12/17 5:36	58
30/12/17 4:36	59	31/12/17 5:41	58
30/12/17 4:41	59	31/12/17 5:46	58
30/12/17 4:46	58	31/12/17 5:51	59
30/12/17 4:51	59	31/12/17 5:56	59
30/12/17 4:56	59	31/12/17 6:01	59
30/12/17 5:01	59	31/12/17 6:06	59
30/12/17 5:06	60	31/12/17 6:11	58
30/12/17 5:11	60	31/12/17 6:16	59
30/12/17 5:16	58	31/12/17 6:21	59
30/12/17 5:21	59	31/12/17 6:26	58
30/12/17 5:26	59	31/12/17 6:31	59
30/12/17 5:31	59	31/12/17 6:36	60
30/12/17 5:36	59	31/12/17 6:41	59
30/12/17 5:41	59	31/12/17 6:46	60
30/12/17 5:46	59	31/12/17 6:51	60
30/12/17 5:51	59	31/12/17 6:56	60
30/12/17 5:56	60	31/12/17 23:01	72
30/12/17 6:01	60	31/12/17 23:06	72
30/12/17 6:06	49	31/12/17 23:11	74
30/12/17 6:11	55	31/12/17 23:16	73
30/12/17 6:16	60	31/12/17 23:21	74
30/12/17 6:21	60	31/12/17 23:26	75
30/12/17 6:26	60	31/12/17 23:31	74
30/12/17 6:31	44	31/12/17 23:36	75
30/12/17 6:36	60	31/12/17 23:41	73
30/12/17 6:41	54	31/12/17 23:46	73
30/12/17 6:46	61	31/12/17 23:51	75
30/12/17 6:51	59	31/12/17 23:56	74
30/12/17 6:56	58		
30/12/17 23:01	65		
30/12/17 23:06	58		
30/12/17 23:11	59		
30/12/17 23:16	60		
30/12/17 23:21	60		
30/12/17 23:26	59		
30/12/17 23:31	62		
30/12/17 23:36	54		
30/12/17 23:41	52		
30/12/17 23:46	60		
30/12/17 23:51	60		
30/12/17 23:56	56		
31/12/17 0:01	60		
31/12/17 0:06	51		
31/12/17 0:11	61		
31/12/17 0:16	53		
31/12/17 0:21	56		
31/12/17 0:26	54		
31/12/17 0:31	60		
31/12/17 0:36	59		
31/12/17 0:41	59		
31/12/17 0:46	60		
31/12/17 0:51	59		
31/12/17 0:56	58		
31/12/17 1:01	59		
31/12/17 1:06	59		
31/12/17 1:11	58		
31/12/17 1:16	59		
31/12/17 1:21	59		
31/12/17 1:26	58		
31/12/17 1:31	59		
31/12/17 1:36	47		
31/12/17 1:41	58		
31/12/17 1:46	59		
31/12/17 1:51	58		
31/12/17 1:56	58		
31/12/17 2:01	58		
31/12/17 2:06	58		
31/12/17 2:11	58		
31/12/17 2:16	59		
31/12/17 2:21	58		
31/12/17 2:26	58		
31/12/17 2:31	58		
31/12/17 2:36	58		
31/12/17 2:41	57		
31/12/17 2:46	58		
31/12/17 2:51	57		
31/12/17 2:56	58		

Graphic Presentation of Continuous Noise Monitoring Result (ACL3-City Hall)



After the investigation, no construction works was conducted by Contractor HK/2012/08 at CRIII area and Contractor HY/2009/18 at P1 Road on 2 December 2017. Meanwhile, automobile racing event was held at area opposite to the monitoring station during the concerned period and considered as the major noise contribution. As such, the exceedance was considered as non-project related.

After the investigation, no construction works was conducted by Contractor HK/2012/08 at CRIII area and Contractor HY/2009/18 at P1 Road on 4 and 11 December 2017. Meanwhile, preparation works for public event was held at area opposite to the monitoring station during the concerned period and considered as the major noise contribution. As such, the exceedance was considered as non-project related.